

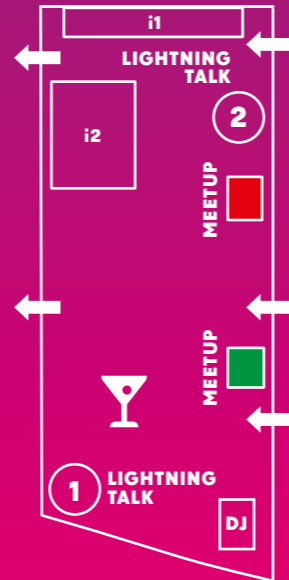
MAP

- A2** FinTech Group
- A4** Wissenschaftsjahr 2016*2017
Meere & Ozeane
- B1** Konrad-Adenauer-Stiftung
- B2** Friedrich-Ebert-Stiftung
- B3** WWF & LichtBlick
- B4** TINCON
- B5** degewo
- B6** Rheinland-Pfalz
- B7** netzpolitik.org
- B8** Hans-Böckler-Stiftung
- C1** Amorelie
- C2** DAAD
- C3** terre des hommes
Hilfe für Kinder in Not
- C4** newthinking
- C5** WIRE
- C6** CIVEY
- C7** Bakamo.Social
- C8** Deutsche Telekom
- D1** #BällebadBayern
- D2** Microsoft
- D3** Ipsos
- E1** Baden-Württemberg
- E2** DB - re:design mobility
- E3** Die Techniker
- E4** Daimler
- F1** Makerspace hosted by
GIG and FabLab Berlin
- F2** rbb TalkLab & WDR
- F3a** re:connecting EUROPE
- F3** Creator Broker Owner
- F4** de.digital
- F5** Google
- F6** Bundesministerium für
Arbeit und Soziales (BMAS)
- F7** World Poverty Clock
Trendradar
- F8** oolipo
- F9** Friedrich-Naumann-Stiftung
- G1** ZDF
- G2** dctp.tv
- G3** Deutschlandradio
- H3** Deutsche Post
- H8a** fischerAppelt
- i1** Newsroom re:publica
@LOL_Table
- i2** IBM
- J0** DB Green Solutions

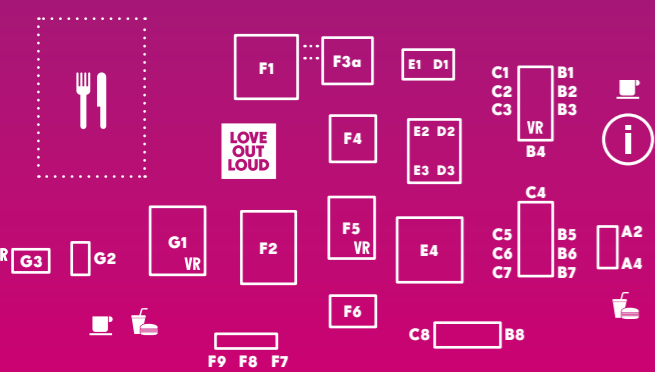
- MEDIA CONVENTION Berlin
- Restrooms
- Changing Table
- Disabled Toilet
- Info Point
- Baggage drop-off
- Live Translation
- Medics
- Restaurant
- Drinks / Bar
- Coffee
- Food / Snacks
- Elevator
- Virtual Reality

NETWORKING AREA

In this area is space for connecting with other as well as for lightning talks und meetups – to discuss big issues in small groups. But it is also the place where the re:publica Newsroom is situated and the LOL blackboard from Anni, Jule & Melanie is waiting for you. If you wanna relax: drinks and a cosy place to sit are provided in the networking area, too.



EXHIBITION AREA



LABORE:TORY

Ground Floor: Stage L1 featuring talks and performances.

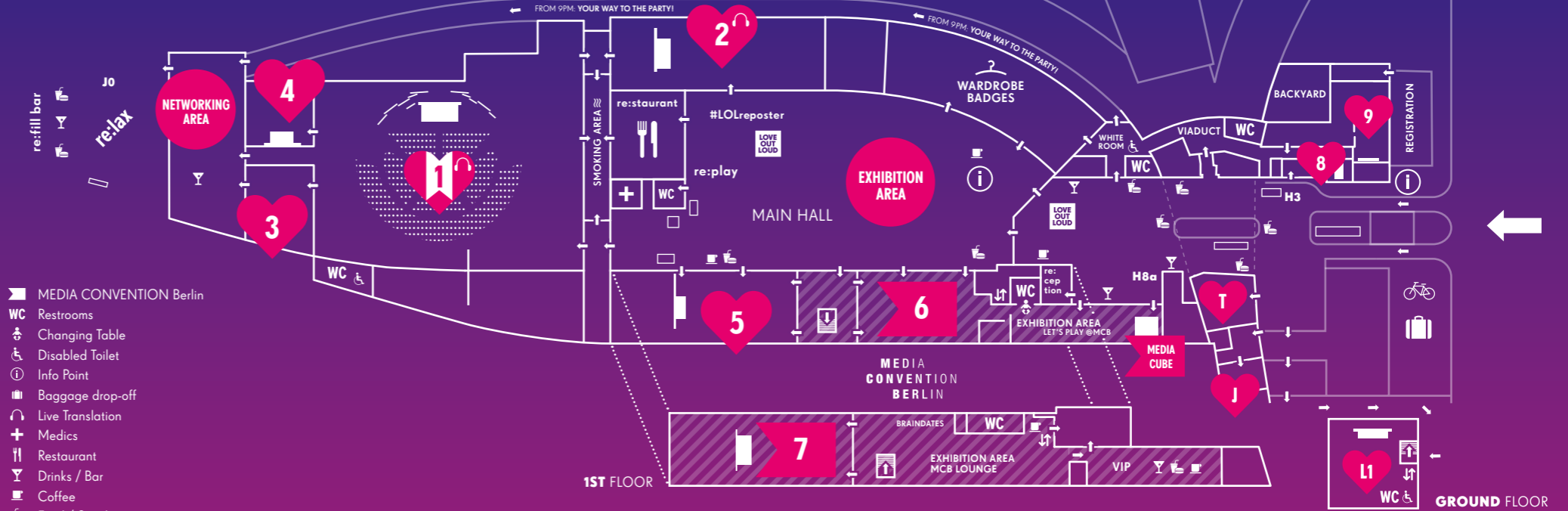
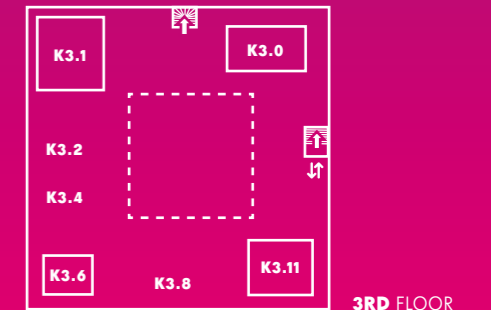
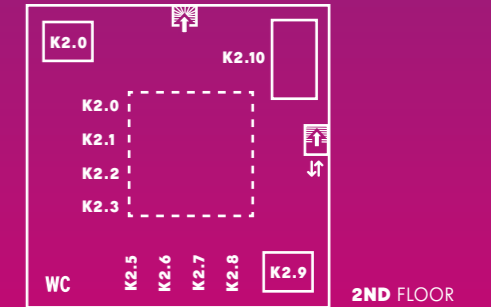
1st Floor: Stage L2 breaks the barrier speaker-audience and includes a Video Lounge to chill, recharge and watch our selection of inspiring videos.

2nd Floor: Includes art installations, paintings, Virtual Reality experiences focusing on the tracks Love Out Loud!, sub:marine and science-fiction.

3rd Floor: Includes Virtual Reality experiences, a Community Corner for social organisations and a Naughty Corner with the sassy side of Love Out Loud!

- | | |
|---|--|
| K1 Video Lounge | K2.8 DEEP |
| K2.0 How Was School Today? | K2.9 Microsoft HoloLens |
| K2.1 We Who Remain | K2.10 Paintings by Stuart Sheldon |
| K2.2 WDR - Inside Auschwitz | K3.0 Mozilla Foundation |
| K2.3 Notes on Blindness | K3.1 Community Corner |
| K2.4 Alteration | K3.2 New Dimensions –
Virtual Reality Africa |
| K2.5 Helmholtz-Zentrum
Küstenforschung 360° | K3.4 iAnimal - Animal Equality |
| K2.6 Auf Tauchstation:
Das virtuelle Korallenriff | K3.6 VR Base |
| K2.7 Coral Empathy Device | K3.8 Motherboard |
| | K3.11 Naughty Corner |

labore:tory



GROUND FLOOR

1ST FLOOR

2ND FLOOR

3RD FLOOR